

French Tending & Belgians

History: Belgian Shepherds were used as herding dogs in a tending type format:

Histoire Naturelle de la Belgique (Natural History of Belgium) 1848 by Julien Deby: "of medium height, shapes less robust than tendinous [Sinewy]; sharp nose, long coat and rough on the body and the limbs; black colour with red-brown spots; sometimes entirely red-brown or black; semi-falling or pricked ears, mobile; a tail that isn't curled from its base on; long muzzle; remarkable intelligence; rather ferocious instinct. Everyone knows this animal, its habits and it's qualities... the guardian of our flocks, rustic, resistant and above all intelligent, a quality that no-one can deny".



They worked large groups of sheep, one or two dogs for up to 200 head of sheep or one dog for about 10 or so cattle. Each day the shepherd would collect the sheep from the fold



And take them down the road to a place where they could pasture
(A herdsman and cattle in a Brabantine landscape by Henriette Ronner-Knip)



WikiGallery.Org



The dog had to keep the livestock ON the road and out of other pastures or fields. But the “road” might just be a path. Sometimes the herdsman led the flock and sometimes the herdsman followed behind. To this day, dogs are still used in this fashion:



Il pastore Luciano Paoli

I pastore Luciano Paoli attraversa il centro abitato di Vas

Credit: <http://www.flickr.com/photos/23868213@N03/2284881703/in/set-72157603968411303>



moving sheep on the highway in a downpour, Spanish Pyrenees -- credit: travelswithSheila.com



April 18, 2011 Heber-Reno Sheep Trail in Arizona Credit: <http://windrosefiberstudio.blogspot.com/2011/04/sheep-drive.html>

Once in the pasture, the dog watched the sheep or cattle and kept them in the graze



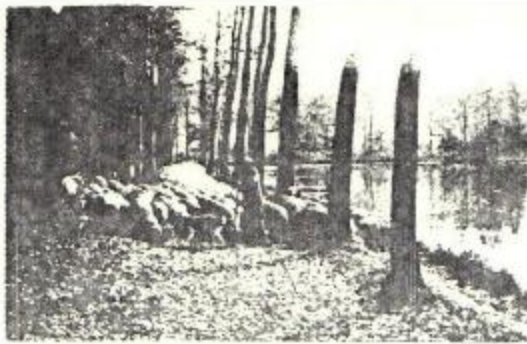
910850

CARPENTIER, Evariste, Belgian, 1845-1922
 The Noon Hour – Shepherdess at Rest, 1885

27



Berger avec ses moutons dans le Bois de la Cambre.
 De chaque côté du troupeau, un Laekenois veille.



Carte postale - Troupeau dans la forêt de Soignes
 (Rouge Cloître).
 Postkaart - Kudde in het Zoniënwood (Rouge
 Cloître).



Afterwards, the dog brought the flock home again.