



Chien de Berger Belge.

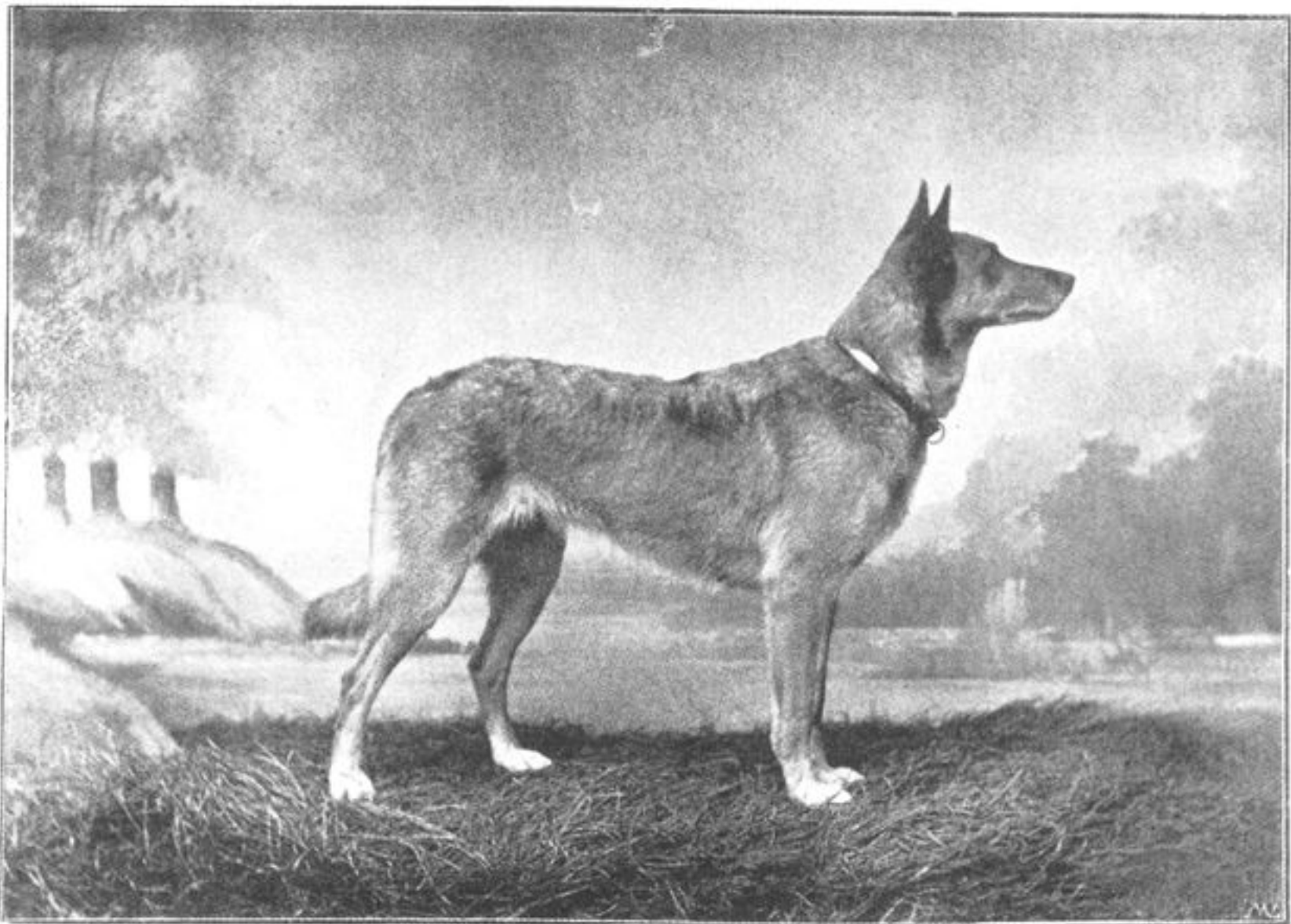
Belgian Sheep Dog.

General appearance. A very intelligent and rustic dog, accustomed to be in the open air, built to withstand all vicissitudes of weather, so common in Belgium. He is a good guardian and a splendid watch-dog, his sagacity, activity, enduring strength and dauntless courage makes him a protector of his master. He likes to move in circles, instead of straight on. His coat is always dense, abundant and makes an excellent, protective jacket.

Head. Long; skull not too broad, forehead more flat than rounded; muzzle pointed; stop moderate.

Nose. Black.

Eyes. Brown or yellow; expression inquiring and intelligent.



„Wanna“.

owned by Mr. F. HUYGHEBAERT, Malines. (Reproduced from *Chenil et Basse-Cour.*)



„Sam“,

owned by Mr. F. MARTENS, Brussels. (Reproduced from *Chasse et Pêche*.)



„Mira“ and „Bazoef“,

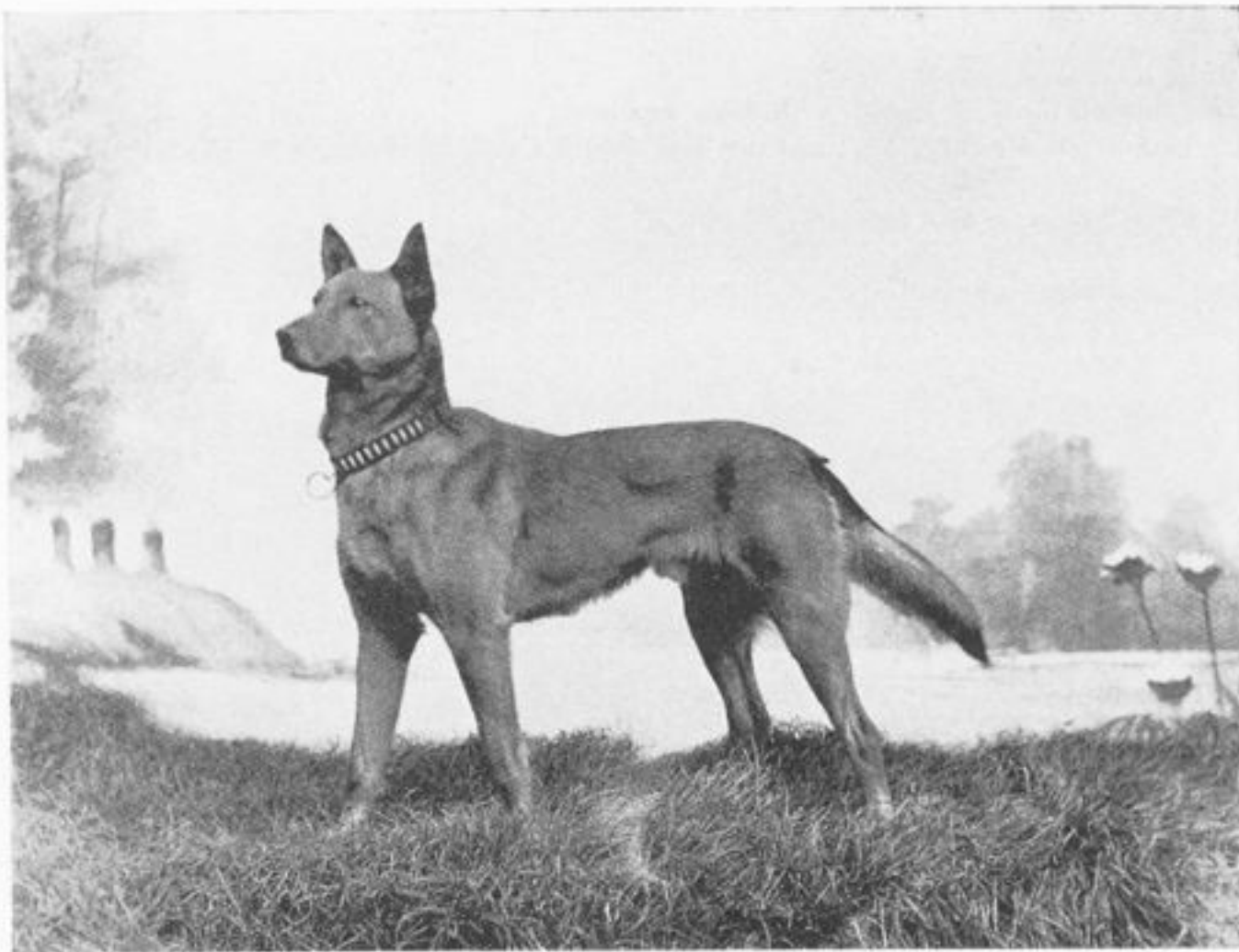
owned by Mr. A. CLAESSENS and Mr. C. ROBERFROID, Brussels. (Reproduced from *Chasse et Pêche*.)

Ears. Triangular, stiff and erect, well set on, semi-long. (Other carriage of ears is a disqualification.)

Neck. Round, rather long.

Shoulders. Long and sloping.

Chest. Not too broad, but deep.



„Tjop“,

owned by Mr. F. HUYGHEBAERT, Malines. (Reproduced from *Chasse et Pêche*.)



'Fram',
owned by Mr. F. HUYGHEBAERT, Malines.
(Reproduced from *Chasse et Pêche*.)

Back. Straight, broad and strong, of medium length.

Belly. Moderately drawn up.

Hind-quarters. Well muscled.

Legs. Straight, well set under the body, well boned and rather long.

Feet. Round, cat-feet.

Tail. Strong at the base, of medium length, the three varieties have different particularities; in repose carried low, with the tip slightly upwards; carried gaily when excited, but not curled over the back. Dogs with docked tails or bobtails are disqualified.

Height at shoulder. About 21½ inches.

Weight. About 54 lb.

A. — LONG COATED.

Colour. Self-coloured black.

Coat. Long and straight on the whole body, except on the head, the outside of the ears and the underside of the legs; the inside of the ears is protected by dense hair.

Neck. Long coated round the neck, making a frill or mane.

Fore-legs. Well feathered; hips long and bushy.

Tail. Very profuse, well feathered.

B. — SMOOTH COATED.

Colour. Reddish black, if possible with black muzzle.

Coat. Smooth on the body, head and the legs; longer round the neck, on the thighs and at the underside of the tail.

Tail. Slight feather at the underside.

Faults. Semi-long coat and a coat mixed with wiry hair.

C. — WIRE HAired.

Colour. Dark ash-gray.

Coat. Hard, dry and bristling, not lying close to the body; of the same length (about one inch) on the whole body. The coat of the head not longer, so as to give him a resemblance to the French Chien de Brie.

Tail. Bushy coated, but without feather.

Faults. Coat too long, silky, curled or felted; long eye-brows, moustache or beard.



'Dax',
owned by Mr. L. MERTENS, Manage. (Reproduced from *Chenil et Basse-Cour*.)

